

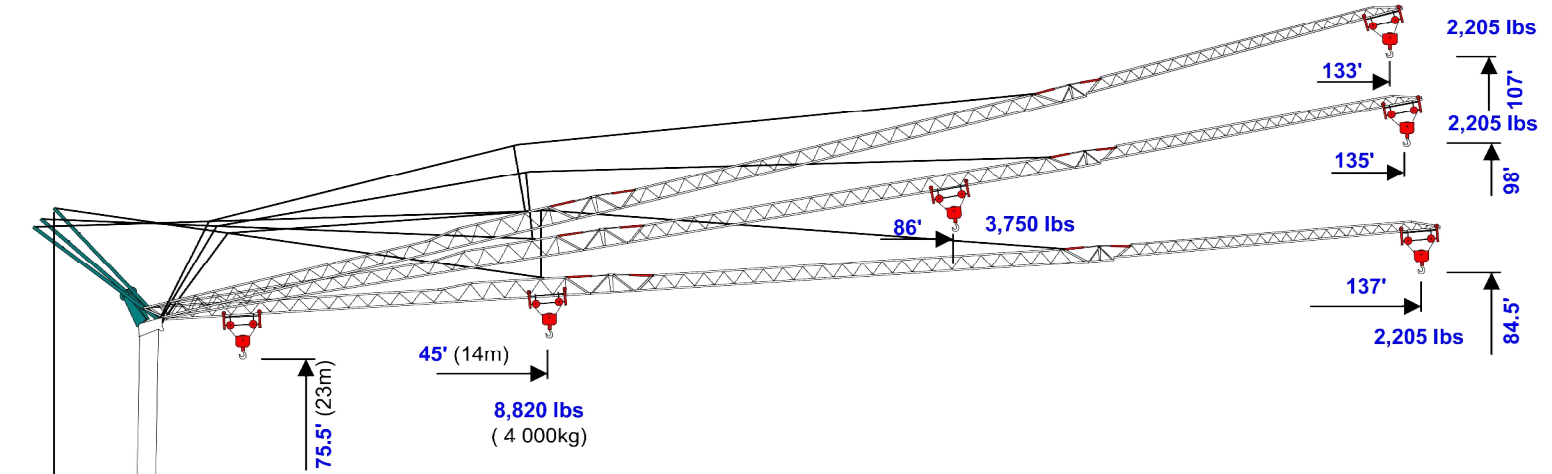


VICARIO

Self-Erecting Crane

V 22137/85

(2,205 lbs, 137'/85')

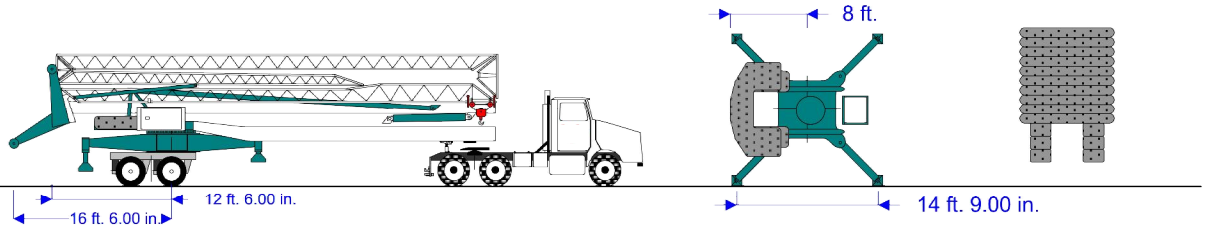


Power Requirements
Single Phase or Three Phase
240V or 460V

Hydraulic Outriggers

Base Ballast X 6 2,975 lbs
Ballast Blocks X 10 4,300 lbs
Total Ballast: 60,860 lbs
Crane Weight: 39,250 lbs
Total Erected Weight: 100,110 lbs

Maximum Reactions
81,325 lbs



	Hook	Ft.	43	46	52	59	66	72	79	85	92	98	105	112	118	125	131	137
	Radius	Meters	13.1	14	16	18	20	22	24	26	28	30	32	34	36	38	40	41.8
2 Part	138'	Lbs	8,820	8,103	6,900	5,997	5,293	4,730	4,268	3,882	3,556	3,277	3,034	2,822	2,635	2,467	2,317	2,205
Block	42m	KG	4,000	3,675	3,129	2,720	2,401	2,145	1,936	1,761	1,613	1,486	1,376	1,280	1,195	1,119	1,051	1,000

Rocky Mountain Crane & Equipment Rental
PO Box 2888 McCall, ID 83638
(208) 696-1476 Ph. / (866) 756-0090 Fax
www.rockymtncranes.com